

# SHEEPMEAT PRIMAL CUTS

**A** LEG CUTS 5065

SILVERSIDE 5071



OUTSIDE 5075



THICK FLANK 5076



KNUCKLE 5072



TOPSIDE 5073



TOPSIDE CAP OFF 5077



CHUMP 5130



RUMP 5074



**B**

LOIN 4860

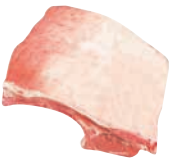


SHORT LOIN 4880



**C**

RACK 4932



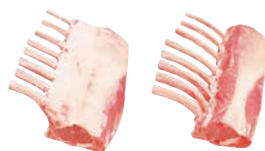
RACK CAP ON  
Frenched 4756



RACK CAP OFF  
4748



RACK CAP OFF  
Frenched 4764



**E**

NECK 5020



**D**

SQUARE CUT  
SHOULDER 4990



SHOULDER - SQUARE CUT  
(Rolled/Netted) 5050



SHOULDER -  
OYSTER CUT 4980



SHOULDER -  
BANJO CUT 4995



**E**

NECK FILLET ROAST  
5059

